

BOAT NUMBER ASSIGNED  
BY TOURNAMENT OFFICIAL # \_\_\_\_\_

**TEAM MEMBER #1 (PLEASE PRINT)**

Name \_\_\_\_\_  
Address \_\_\_\_\_  
City \_\_\_\_\_  
State \_\_\_\_\_ Zip \_\_\_\_\_  
Phone \_\_\_\_\_  
E-Mail \_\_\_\_\_

**TEAM MEMBER #2 (PLEASE PRINT)**

Name \_\_\_\_\_  
Address \_\_\_\_\_  
City \_\_\_\_\_  
State \_\_\_\_\_ Zip \_\_\_\_\_  
Phone \_\_\_\_\_  
E-Mail \_\_\_\_\_

In signing this application, I/we hereby waive and release all other contestants, hosts, sponsors, and the Tournament Officials/Director from all claims of injury and or damage incurred in connection with this tournament. I/we further have read the general rules; and UNDERSTAND and agree that the Tournament Committee reserves the right to refund this entry fee in the event the Tournament Committee chooses for any reason not to accept this application. I/we also agree to take a Polygraph and /or Drug Test randomly given to winners and other contestants during the event. Failure to take or pass the tests will result in immediate disqualification without recourse. I/we also understand that the Tournament Committee has no power over the elements of weather or inclement weather, and I/we accept all responsibility for our decision to participate.

Signature #1 \_\_\_\_\_

Signature #2 \_\_\_\_\_

Tammy Winters  
696 Timber Ridge Circle  
Sheridan, AR 72150



**7<sup>th</sup> Annual**



**Bass Tournament**

**March 27, 2010**



**Arkansas Game & Fish Ramp**

**7:00 a.m. – 3:00 p.m.**

**\$1500.00**

**GUARANTEED 1<sup>ST</sup> PLACE**

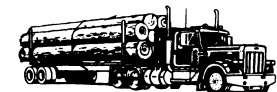
**PLUS**

**SET OF CHAMPION ANGLER JACKETS**

**Celebrity Weigh Master:**

**BOB ROBBINS**

*Platinum Presenting Sponsors:*



**SHELBY TAYLOR TRUCKING, INC.**  
Sheridan, Arkansas  
870-942-5580

**Entry Fee \$80.00 per boat**

**\$1500.00  
GUARANTEED  
1<sup>ST</sup> PLACE  
PLUS  
SET OF CHAMPION ANGLER  
JACKETS**

**Cash & Prizes to Top 10 Places**

**Entry Fee includes  
tournament and lunch**

**Participants will automatically be  
entered for door prizes when chips  
are turned in by 3:00**

**FOR TOURNAMENT INFO CONTACT:**

**Chris Bennings (870) 699-4744**

**To register by mail: Send Forms & Fees to:  
Tammy Winters, 696 Timber Ridge Circle,  
Sheridan, AR 72150**

**PLEASE MAKE ALL CHECKS TO  
AMERICAN CANCER SOCIETY**

**To pay online using PayPal:**

**[http://arkansastournamentfishing.com/relay\\_for\\_life](http://arkansastournamentfishing.com/relay_for_life)**

On behalf of the American Cancer Society "Relay for Life" Bass Tournament Committee, I would like to thank you for your support. This is our 7th Annual tournament, which has grown by leaps and bounds each year. We expect this year to be no different. Each year in the U.S., the American Cancer Society invests over \$130 million a year for research funding. To date, the Society has funded 40 Nobel Prize winning researchers. ACS fights for lifesaving laws to increase federal research funding, promote early detection of cancers, improve access to care, and support cancer patients of all ages and gender. The Society's services for cancer patients, survivors, caregivers, and those who love them include transportation to treatment, peer support group programs, and resources for practical assistance. As a participant, or sponsor, you will be helping to increase the opportunities of helping in the fight against cancer, and the hope of a cure. Your donation or entry fees will be 100% tax deductible, and the personal satisfaction of knowing that you are helping in the fight, will be gratifying. So come on out March 27, 2010 to Brady Mountain on Lake Ouachita and join us as we "CAST FOR A CURE"!

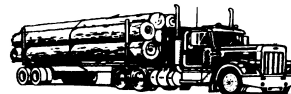
Sincerely,

James House-Tournament Director

*Platinum Presenting Sponsors:*



**MARINAS™  
International**



**SHELBY TAYLOR TRUCKING, INC.  
Sheridan, Arkansas  
870-942-5580**

*Gold Sponsor:*

**KOHLER.**

## BASS TOURNAMENT GENERAL RULES

- Participant Eligibility:** This is a team tournament for amateur anglers. If you consider yourself a professional fisherman or if the 10% of your annual income is received from prize money won in the tournaments, income received from sponsors, and other fees and income derived from fishing, you are ineligible to fish this event. Any contestant under the age of 16 who must be accompanied by an adult, legal guardian who must assume liability for the minor participant in all matters during tournament hours.
- Pre-tournament Practice:** The Lake will be open for practice at all times.
- Sportsmanship:** Any team that displays poor sportsmanship, violates the tournament rules or violates any Arkansas fishing laws will be disqualified. Teams must strictly follow the Army Corp of Engineers rules while entering and exiting locks. Protests must be submitted prior to start of weigh-in. NO EXCEPTIONS.
- Alcoholic Beverages:** Not at any time during tournament hours will a contestant be permitted to consume alcoholic beverages or drugs other than prescription.
- Permitted Fishing Locations:** Contestants may fish anywhere on Lake Ouachita that is accessible by boat except within 50 yards of a gas pump, marina or another contestant's boat which is anchored and 100 yards of either side of the fish release area at Brady Mountain Resort. Contestants must remain in the boat at all times.
- Safety:** Each contestant must wear a chest type Coast Guard approved life preserver at all times when combustible engine is running; each boat must be equipped with an emergency engine cutoff device, and it must be attached and snapped in place on the driver's body when the combustible engine is running. The use of mobile communications equipment is not permitted during tournament hours, the only exceptions are in the case of an emergency or if a boat breaks down.
- Tackle and Equipment** Only artificial lures with the exception of pork chunks or trailers may be used. Only one rod and reel combination can be used at any one time during the tournament by a participant. Trolling is not permitted. All bass must be caught alive and in a conventional manner.
- Boat and Motor:** NO engine may exceed the B.I.A. horsepower rating for the boat on which it is used. All boats must have a functional emergency kill switch that must be secured to the operator's coast guard approved life vest any time the combustible engine is running. All boats must be equipped with an aerated live well, sufficient enough to keep all fish alive.
- Scoring:** Scoring will be determined by the pounds and ounces of each team's weight. Only largemouth, Kentucky, smallmouth and spotted bass will be weighed. The team limit is five (5) fish. The length limit is thirteen (13) inches for largemouth. The length limit for Kentucky, small mouths and spotted is thirteen inches (13) as well. All fish will be measured on a flat board with mouth closed and tail pinched. A penalty of .50 lbs will be assessed for each dead fish weighed. A short fish that is presented at the weigh-in will result in TEAM DISQUALIFICATION.
- Late Penalty:** Teams that are not checked in at the appointed time will be disqualified. All chips must be turned in by 3:00 pm.
- Ties:** In case of a tie, the team with the largest fish will prevail. In the event this has not been determined, the team that registered first wins the tie.
- Polygraph:** All winners are subject to a polygraph and/or drug test. Tournament officials have the right to ask any participant to take a polygraph test. Refusal of such tests will result in disqualification.
- Tournament Hours:** Tournament hours will be from 7:00 AM until 3:00 PM, unless adjusted by tournament official. Chips must be turned in by 3:00 pm to be eligible for weigh-in.
- Take off Positions:** Take off positions will be determined by the order the entry fees are received. Contestants must check in with tournament officials at the weigh in facility prior to take off. At that time, each boat will be given their number which will determine the order you leave.
- Release of Fish:** All fish will be released after weigh in by tournament official.